

Price Guide £1,200,000

29a Marine Drive West, West Wittering, Chichester, PO20 8HH





2



3



2



C



C

Lowspray occupies an enviable beach front location enjoying panoramic views over the Eastern Solent and the Isle of Wight.

Located in Marine Drive West, a sought after private road within the parish of West Wittering, the property has an enclosed and established south facing courtyard garden, landscaped and planted with marine loving plants with a gate leading from the garden area toward the beach.

The 3 bedroomed accommodation is tastefully presented with an interior design flow based upon "Nordic Coastal styling" including distressed wood flooring, a feature wood burner and plenty of glazing on the southern elevations providing light and ventilation, optimizing the views from the two principle living room spaces which are interconnected by the fabulous kitchen, providing social entertaining and living space areas, with doors opening onto the south facing garden area beyond.

The entrance hall leads into an inner hall with storage cupboards and continues into the sitting room area with features including a feature wood burner and doors opening onto the south facing courtyard garden area with views overlooking the beach and coast.

The luxury kitchen finished to a high specification with solid stone kitchen worktops and waterfall ends to breakfast bar area, twin Neff professional mid height ovens, AEG 5 ring hob, Hob2Hodd extractor over, AEG comfortlift dishwasher and fridge/freezer, plus interior designed mood lighting and underfloor heating.

Moving through the kitchen there are doors into the Orangery, a magnificent entertaining area with under floor heating, glazed elevations and a lantern roof, with doors to outside creating an inside/outside area for socialising.

To the side of the property is a door to a covered shower area - ideal if you have just come off the beach following a surf or swim. Beyond is a small bike store/board store area.

The principal bedroom includes an en-suite. There are two further bedrooms and a family bathroom with two person Whirlpool bath with twin hand held brushed brass showerheads, Italian Marble flooring with under floor heating, wash basin and wc.

The outside space is enclosed and sheltered, with courtyard style paving and planted with marine environment plants, providing an established lush garden feature not often found adjacent to the beach, which is just beyond. The property has a long driveway area providing off road parking for 2/3 cars.

Windows and doors are triple glaze. Gas fired central heating system including underfloor heating and all mains services are connected.

Tenure - the property is Leasehold with the balance of a 125 year lease from 19th November 1991.

The current owners have enjoyed living in this property as their principal home. Equally, Lowspray would also make a wonderful lock up and leave, holiday home.

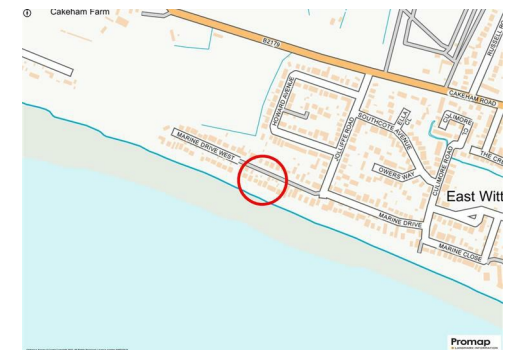
Viewing is highly recommended.





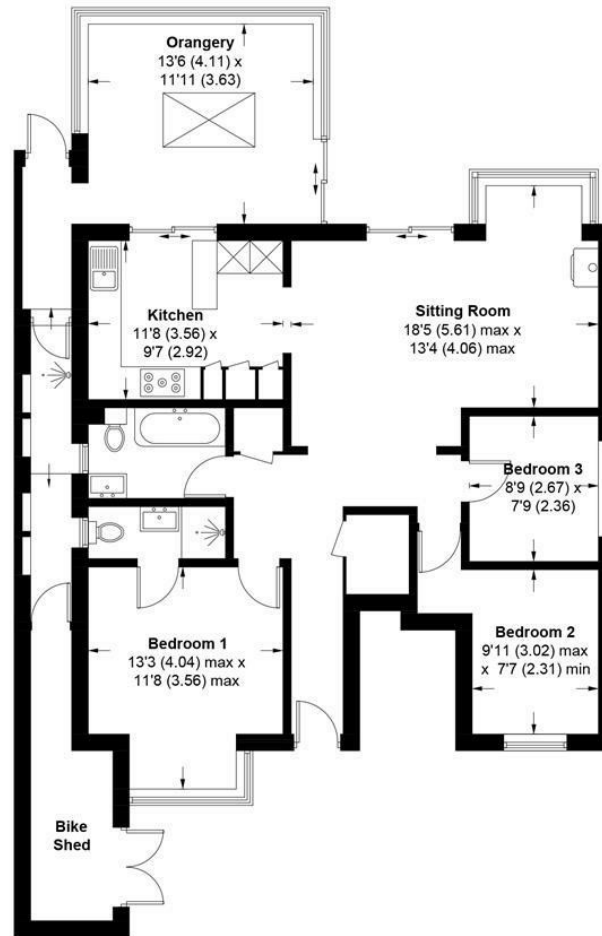






Low Spray, 29A, Marine Drive West, PO20 8HH

APPROXIMATE GROSS INTERNAL AREA = 1244 SQ FT / 115.6 SQ M



GROUND FLOOR

This plan is for layout guidance only. Not drawn to scale unless stated. Windows and door openings are approximate. Whilst every care is taken in the preparation of this plan, please check all dimensions, shapes and compass bearings before making any decisions reliant upon them. (ID1015818)

Produced for Baileys Estate Agents

Working in co-operation with the owners we have tried to be accurate and informative in the presentation of our property details. Baileys would advise that no representations or warranties are made or given in respect of the condition of any items mentioned in the Sales Particulars. If however, you are not sure about a particular point please contact us to verify the information. This is especially important if viewing the property involves travelling some distance.