



Price Guide £450,000

6 Seafeld Close, East Wittering, West Sussex PO20 8DP





1



2



1



E



D

Number 6 is an older style bungalow located in a good position with huge scope for upgrading and improvement, situated within a short walk of the beach. Centrally heated with boiler and radiators. Double glazed windows and external doors.

**Entrance Hall:**  
Inner door to entrance hall with built in cloaks cupboard.

**Sitting/Dining Room:**  
Fireplace feature and sliding doors opening into the Conservatory.

**Conservatory:**  
Glazed conservatory with part solid walls and glazed roof. Door leading to outside and a personal internal door to the garage.

**Kitchen:**  
Comprising a range of floor and wall mounted cupboards with fitted worktops and circular inset sink and drainer. Electric hob and eye level oven. Space for a dishwasher or washing machine. Door to side porch and garden. Airing cupboard with insulated hot water tank with immersion heater.

**Bedroom One:**  
Twin aspect room with built in wardrobe cupboard.

**Bedroom Two:**

Twin aspect room with built in wardrobe cupboard.

**Shower Room:**  
Corner shower, wc and wash basin

**Outside:**

**Single garage:**  
With up and over door to front and side personal door to conservatory with window overlooking the rear garden.

**Gardens:**  
The property is approached via a driveway entrance with tarmac driveway providing off road parking leading to the garage and side entrance porch for the property. A side pedestrian gate provides access to the rear garden area with shrub borders and hard landscaping, for ease of maintenance.

Viewing is by appointment only with Baileys - please call us on 01243 672217







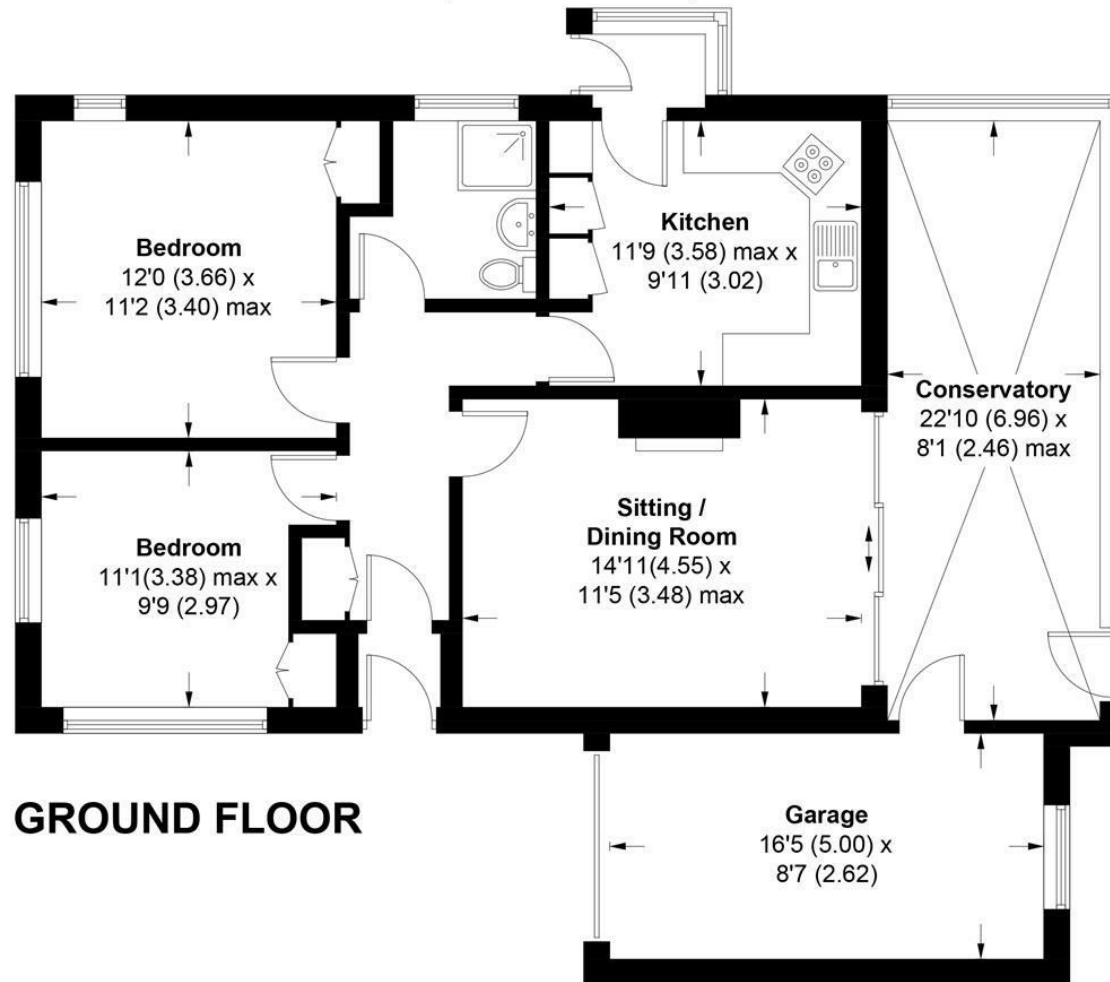
01243 672217

[www.baileys.uk.com](http://www.baileys.uk.com)





**6, Seafield Close, PO20 8DP**  
APPROXIMATE GROSS INTERNAL AREA = 1061 SQ FT / 98.6 SQ M  
(INCLUDING GARAGE)



This plan is for layout guidance only. Not drawn to scale unless stated. Windows and door openings are approximate. Whilst every care is taken in the preparation of this plan, please check all dimensions, shapes and compass bearings before making any decisions reliant upon them. (ID1000650)

**Produced for Baileys Estate Agents**

Working in co-operation with the owners we have tried to be accurate and informative in the presentation of our property details. Baileys would advise that no representations or warranties are made or given in respect of the condition of any items mentioned in the Sales Particulars. If however, you are not sure about a particular point please contact us to verify the information. This is especially important if viewing the property involves travelling some distance.