



Guide Price £420,000

4 Turnstone Close, West Wittering, PO20 8FJ

BAILEYS



1



3



1



B



D

A delightful 3 bedroom detached home built by Barratt Homes, situated on the edge of the recently built Sandpiper Walk development on a corner plot, located toward the northern end of East Wittering village, abutting farmland.

The free flowing kitchen/dining room has glazed bay doors opening onto the south facing and part walled rear garden. The first floor includes a master bedroom with an en-suite shower room, plus a further double bedroom, single bedroom and family bathroom. Situated to the side of the property is a single garage plus off road parking.

Entrance Hall

With under stairs utility cupboard with space for washing machine.

Cloakroom

Wc and wash basin

Lounge

A twin aspect room.

Kitchen/Dining Room

Comprising a range of floor and wall mounted cupboards with worktops and inset sink, built in appliances including fridge/freezer, oven, hob and filter hood. Plumbing for dishwasher.

Landing

Bedroom 1 - Ensuite

With built in wardrobe cupboards. En-suite comprising shower, wc and wash basin.

Bedroom 2

With built in wardrobe cupboards.

Bedroom 3

Bathroom

Comprising a bath, wc and wash basin.

Outside

The front garden areas are lawned with shrub borders. The mainly lawned rear garden is south facing, part walled and includes a timber workshop/garden studio.

Garage

A single garage with pitched roof and door to garden.

EPC

Band B.

Council Tax

Band D.

Viewing

By appointment with Baileys 01243 672217



i

NEAREST



SHOPS 0.6 miles



SCHOOL 0.6 miles



BEACH 0.9 miles



BUSES 0.6 miles



TRAINS 7.6 miles



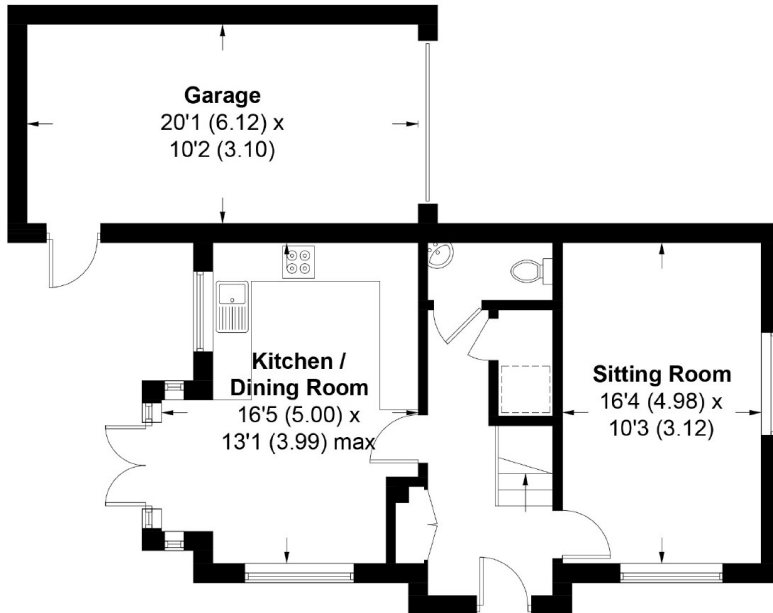


Turnstone Close, West Wittering, PO20

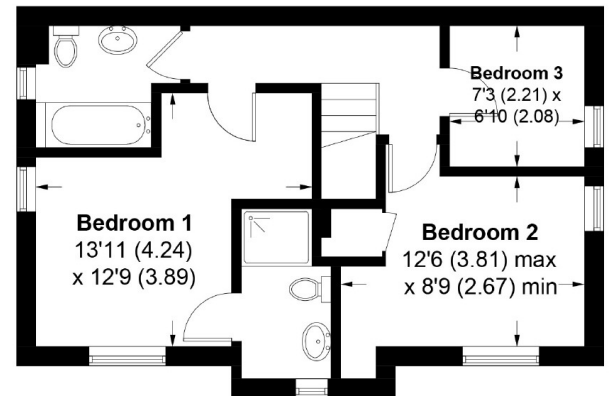
APPROXIMATE GROSS INTERNAL AREA = 963 SQ FT / 89.5 SQ M

GARAGE = 204 SQ FT / 19 SQ M

TOTAL = 1167 SQ FT / 108.5 SQ M



GROUND FLOOR



FIRST FLOOR

This plan is for layout guidance only. Not drawn to scale unless stated. Windows and door openings are approximate. Whilst every care is taken in the preparation of this plan, please check all dimensions, shapes and compass bearings before making any decisions reliant upon them. (ID442038)

Produced for Baileys Estate Agents

Working in co-operation with the owners we have tried to be accurate and informative in the presentation of our property details. Baileys would advise that no representations or warranties are made or given in respect of the condition of any items mentioned in the Sales Particulars. If however, you are not sure about a particular point please contact us to verify the information. This is especially important if viewing the property involves travelling some distance.

17 Shore Road, East Wittering, Chichester, West Sussex, PO20 8DY

01243 672217

info@baileys.uk.com

www.baileys.uk.com

