



Price Guide £750,000

14 Owers Way, West Wittering, Nr Chichester, West Sussex, PO20 8HA

BAILEYS



1



3



1



C



E

Situated in this popular close just 400m to the west of East Wittering village centre and only 300m walk from the beach, an extended three bedroom detached bungalow offered with vacant possession and no onward chain.

The accommodation has both gas fired central heating and Upvc framed double glazing and offers an adaptable and spacious layout with the possibility to create an en-suite to the main bedroom by splitting the very large existing bathroom.

There is a long concrete drive providing parking for several vehicles leading to a detached garage with electric roll over door. The rear garden is enclosed and private.

Link to Virtual Walk Through Video:
<https://my.matterport.com/show/?m=p1eGoD2PjKf>

Entrance Hall: Double built in wardrobe cupboard. Down lighters.

Cloakroom: Wash hand basin and w.c. Half tiled walls. Plumbing for washing machine.

Living Room: (SE and NE) Ornamental stone fire place and hearth. four wall light points.

Kitchen/Breakfast Room: comprehensive range of oak wall and floor cupboard units with corian worktops and sink unit. 'Neff' built in double oven and 'Neff' ceramic hob with cooker hood over. Airing cupboard with hot tank and immersion heater. Feature white brick wall.

Bedroom One: Range of bespoke fitted wardrobe and drawer units including high level storage. Down lighters.

Bedroom Two: Range of bespoke fitted wardrobes and dresser unit including high level storage. Down lighters.

Bedroom Three: Double built in wardrobe. Down lighters.

Bathroom: A large room which has the potential to be divided to create a En-Suite to Bedroom One. 'Sun King' coloured suite of corner bath with mains shower over. W.C. with recessed cistern and wash hand basin with range of pine cupboards. Down lighters. Fully tiled walls. Shaver point.

Outside: Lawned front garden with long concrete drive with parking for several vehicles leading to a detached garage. Close boarded fencing.

The rear garden is laid to lawn with shrub borders and is fully enclosed with high brick and close boarded fencing to the boundaries. Timber Summer House. Crazy paved terrace area.

Detached Garage: Electric roll over door. Side personal door leading in to the rear garden.

Viewing: By appointment with the office please 01243 672217.









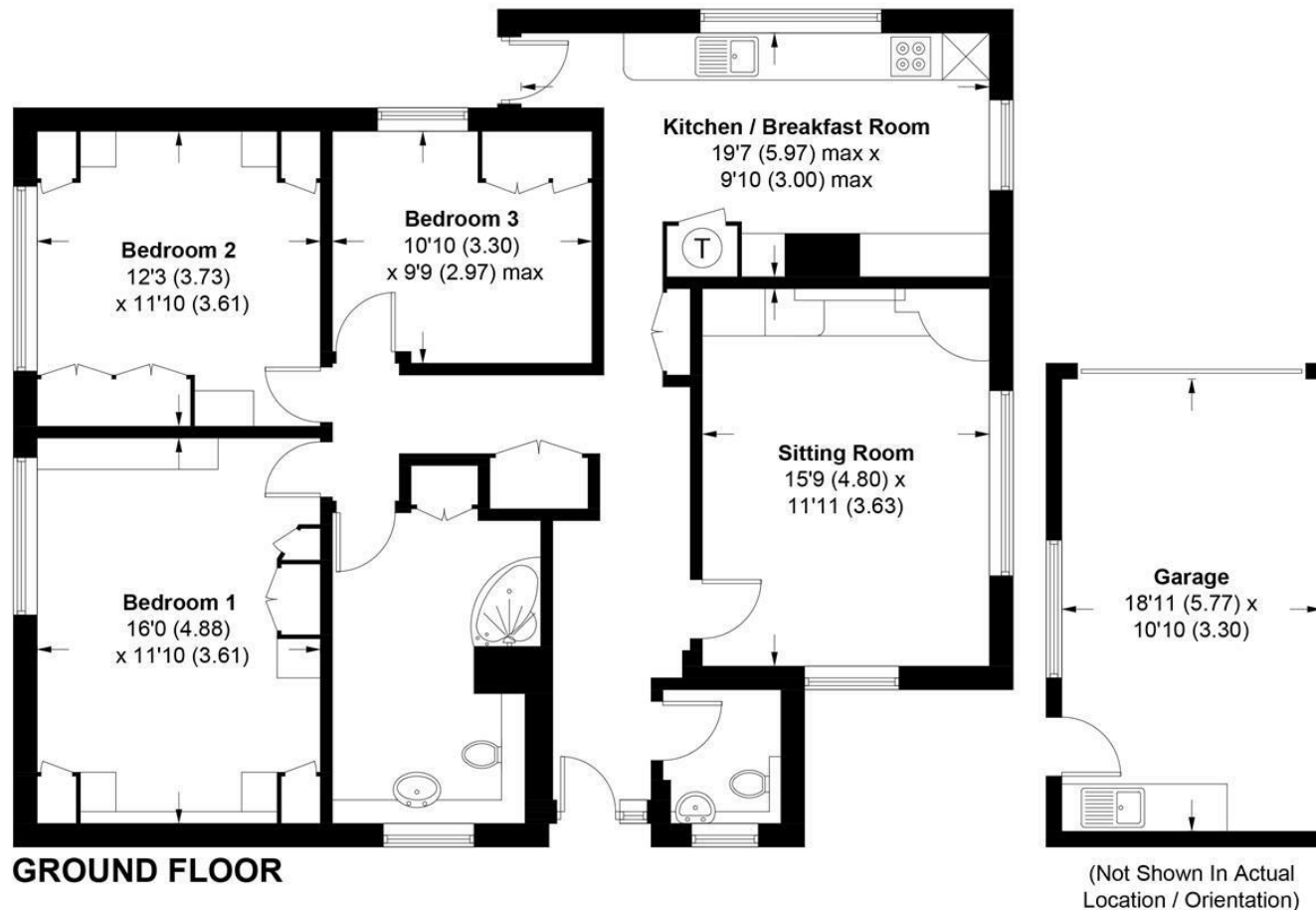


14, Owers Way, PO20 8HA

APPROXIMATE GROSS INTERNAL AREA = 1166 SQ FT / 108.3 SQ M

GARAGE = 204 SQ FT / 19.0 SQ M

TOTAL = 1370 SQ FT / 127.3 SQ M



This plan is for layout guidance only. Not drawn to scale unless stated. Windows and door openings are approximate. Whilst every care is taken in the preparation of this plan, please check all dimensions, shapes and compass bearings before making any decisions reliant upon them. (ID1237034)

Produced for Baileys Estate Agents

Working in co-operation with the owners we have tried to be accurate and informative in the presentation of our property details. Baileys would advise that no representations or warranties are made or given in respect of the condition of any items mentioned in the Sales Particulars. If however, you are not sure about a particular point please contact us to verify the information. This is especially important if viewing the property involves travelling some distance.